

# The British Motorcycle Racing Club



**BMCRC-MRO 2026 CHAMPIONSHIPS**

***OULTON PARK CIRCUIT***

***FINAL INSTRUCTIONS***

***Round 2 – 3-4<sup>th</sup> April 2026***

Clerks of the Course: Caroline Dapre & Den Grant

Deputy Clerk of the Course: Andy Brown

Incident Officer: Ted McDonald

Secretary of the Meeting: Claire Hodgins

Mob: 07756 101500

Version 1 - updated 19/03

ACU Permit Number: ACU 206605

EMN 10/2181

Course Licence Number: 011A

Testday Permit: ACU 206649

**ACCESS TO THE PADDOCKS FROM:**

***17.00 hrs Wednesday 1st April – General Paddock***

***19.00 hrs – Access to Garages***

**(NOTE: Please do not arrive hours before this time – there is a private track hire during the day, this needs to clear first **there is little space for cars/vans to queue on the local approach roads**)**

**Please have your access tickets available for scanning when you get to the gate from Wednesday 1st.**

**TICKETS ARE REQUIRED TO GAIN ACCESS FROM WEDNESDAY – AND IN ORDER TO COME AND GO DURING THE MEETING**

**The circuit manages traffic movements after 12 midnight and requests Teams to remain in place between 12-6am. Should you need to come or go during these times – call Gate Security on 07920 018804**

## **NOTICE – PENALTIES IF YOU DISREGARD**

### **Motorised Paddock Bikes**

**This has to be brought to all Team's attention right up-front AGAIN...We've noticed an increase in the use of motorised transport of all types around the paddock. Personal electric scooters now make regular appearances, even personal "hoverboards".**

**Whilst testing, qualifying and racing is live on circuit – we ask that all riders, helpers and family members, particularly children, put these away until the close of track activity. With the vehicle movement we have around the**

**Paddock during live times – the use of these vehicles is an accident waiting to happen.**

**Even pushbikes should only be used for essential journeys within the paddock and should observe the 10mph speed limit. U-16s should not be using pushbikes whilst the track is live.**

**As too many people have ignored this request, we will now apply penalties to riders if they, members of their team, supporters or family members continue to use vehicles that are not self-propelled. The penalties may range from starting at the back of the grid for your next race, a fine or exclusion for persistent offending.**

**Please respect this request – this is all about the safety of all in the Paddock**

### **Attendee Restrictions**

Solo Teams will be issued 3x tickets as always, British SuperKart Teams 6.

Riders may stay over in the Paddock on Wednesday, Thursday, Friday & Saturday.

Public camping is permitted outside of the paddock, in the grass areas on the inside of Lodge corner (first left after coming through the paybooths).

**Vehicle passes will not be issued or required for this meeting. Public, Friends & Family must park outside of the paddock in the public parking areas. Disabled access is an exception.**

Riders may stay over in the Paddock on Thursday, Friday & Saturday (See below).

**Saturday stay-over is permitted** but Teams must move out of the paddock beyond the gate onto the grass prior to the access bridge (See plan on last page) – and must be off site by mid-morning on Sunday. There is an event taking place in the Paddocks on Sunday – hence the need to move out.

**Public Access** – Spectators are allowed to attend this event, tickets must be purchased online in advance.

### **Online Booking at bemsee.net**

All bookings are online as usual - going live from Tuesday 17<sup>th</sup> March for those who did the first Brands round – otherwise Thursday 19<sup>th</sup>. This is mandatory and we will not be able to take bookings in person on the day.

Payment for the Oulton meeting and testday will be taken one week from the event on **Wednesday 25<sup>th</sup> March**. Please ensure you have sufficient funds on your card to enable payment to be taken. Declined cards will mean that you'll need to give us different card details. Cash payments on the day are discouraged, we need to remove cash handling and the risk associated with that from what we do in Race Office.

All entrants will be emailed e-tickets, these must be presented on the gate to gain entry to the circuit. This covers all days.

### **Processes & Documentation**

After you've entered online – you will be emailed eTickets on Monday 23<sup>rd</sup>. These you can print at home or save on a mobile for presentation at the Oulton main gate. A

reminder, you need to present your ticket to the gate if you leave the circuit and intend to return. This is to protect everyone's security.

Your tickets will be emailed to you as a series of downloadable links. You can also login to your online Profile on bemsee.net – click on "My Profile" and go to "My Tickets" to find those same links.

Payment for the meeting will be taken on **Wednesday 25<sup>th</sup> March**.

At Bemsee meetings you are required to go through Technical Inspection before attending the Race Office for sign-on. (see more details below)

### **Observe the Paddock Plan**

The Paddock area in front of garages is allocated to those who have booked Garage space in advance – please observe these restrictions and park accordingly. There is plenty of space in the main paddock.

British SuperKarts have a designated area – see the Paddock Plan.

There is an onus on riders to ensure space is managed sensibly on this.

### **Garages and Paddock Areas**

Going forward, we plan to house 3-4 riders per single garage at Oulton. Garages should remain fully open at all times to the front and rear for the duration of testing/racing and whilst people are in there working on bikes.

NOTE: Sleeping within the Garages is strictly forbidden.

Hire fees will be £30/rider for each garage – you will pay in advance online. Keys will be available from the Race Office from Thursday 2nd morning. One key holder will need to take responsibility for collecting and returning the key from each garage. Keys must be returned during Saturday 4th morning back to the Race Office.

Garages will be available for advanced reservation by email to **mikedommett@hotmail.com from 2pm on Thursday 26<sup>th</sup> March** - include with that info for each rider if you are booking on behalf of a group. Confirmation emails will be issued to advise the garage details - this will include links to enable you to pay for the garage individually or in groups online, **in advance of the event**.

### **Electricity use in Oulton Garages**

There's only enough capacity to run 4 x riders with tyre warmers per garage. Please do not hook up Motorhomes with kettles & microwaves to the garage supply. Use of too many devices will trip the garage fuses and may lead to the electrical circuits overloading. The circuit will re-set for you once or twice, after that.... you'll be using your own generators.

### **MSV "FAIR USE POLICY" Electricity usage**

You will see MSV signage on site regarding their "Fair Use Policy" on electricity hook-ups. This is in force on Testdays. Please check if you owe fees and see them to make payments.

## Transponder Hire

If you are hiring a Transponder, they will be available for collection from the Race Office **from Friday morning 3rd**. You will need to advise Technical Officials that you are hiring when you attend Inspection. These will have been charged in advance and cleaned.

Some transponders have been losing charge later in recent meetings – hence first raceday collection.

## Be Prepared to Test (Thursday 2nd April)

As is usual for any Testday, we expect you to ensure your bike and kit is fit for purpose. Your bike will need a compliant number on it, we are running the whole event under an ACU Permit, so that is a requirement. There is no separate technical inspection for participation on the Testday. You must first come to Race Office to sign-on if you are entered for the Test. Noise testing is required prior to going on circuit (see below)

## Technical Inspection

The Technical Bay will open from 3pm on Thursday 3<sup>rd</sup> March and will run to around 5.30. The Bay will re-open on Friday at 07.30

Present with all kit on, including helmet. Clothing Inspectors will conduct a check of your kit. On completion of inspections you will be handed a Technical Inspection Card signed by the Inspectors and stickers for your helmet and bike will be applied. You will also need to sign the reverse of the card, before bringing that to Race Office for sign-on.

## Sign-On

The Race Office under the main control tower in the main Paddock to the far LH end of the garages as you look at them. Race Office will be open will be open for rider sign-on from 7.30 on Thursday 2<sup>nd</sup> for the Testday and from 3pm same day for those who have completed Tek Inspection to sign on for the racedays – you should attend with your completed Technical Card **and your 2026 Licence ideally printed out from the ACU Licence System or have it available to show on your Mobile phone**. The Bemsee Race Office team will be present, to visually check licences and deal with any issues and queries. You will show the front & back of your Technical Card and then hand it in as directed. The Race Office Team will note your attendance and mark you off on our sheets – there is no longer a requirement for you to sign the actual sign-on sheet. You will be handed a Practice Permit, take this with you on your first session – it confirms to the Collecting Area staff that you have completed the sign-on process.

You will have accepted the ACU revised declaration regarding the Risks of Motorsport both online when you confirmed your booking and by signing the same declaration that is on the reverse of your Technical Inspection Card.

If the Race Office is closed - Assistance if required is available via the Club's main number 01708 720305, voice messages can be left and these are received by email by our staff and we will call back as soon as possible.

Access to Race Control in the main building will be restricted to essential staff only or by arrangement with the Race Office.

## Noise Levels

Noise levels are closely monitored at all Bemsee meetings, please ensure that your machine complies with the current ACU noise limit of 105dba. You will be required to present your machine for Testing on Thursday morning from 7.30am before going on circuit for testing.

Noise Test Location on Thursday in the Collecting Area

Random noise tests are conducted by Bemsee Technical Officials during Racedays and drive-by monitoring takes place all the time.

## Engine Start Times

**Note: On Wednesday 1st April once you have arrived - engines may not be started in the paddock or garages under any circumstances.**

**ON THURSDAY 2nd TESTDAY - not before 8.45am!**

**You may drive bikes to and from Noise Testing which begins at 7.30am in the Collecting Area – please low revs until the test and idle in the garages at tick-over rather than revving. You can rev to warm up engines after 8.45am**

**The Tannoy also can't operate until 8.45 - although Paddock Tannoy via Mixlr will be in operation alongside our Announcements WhatsApp Group.**

**ON FRIDAY & SATURDAY RACEDAYS - no engines before 8.15am**

**start on circuit is **8.30 am** – Circuit Curfew on BOTH is 6.30pm**

**No race engines to be run on any day after 6.30pm**

## Access to Circuit

Listen to Tannoy announcements or use your Mobile to run the Mixlr app and listen to announcements that way (Search for Bemsee Paddock Tannoy once the app is loaded and open – turn your sound up). We also have an Announcement WhatsApp Channel (see below)

Access to the circuit is only via the Assembly Area - located in the fenced area adjacent to the Technical Inspection Bay. Please ensure you attend in good time for your practice session/race. Don't forget your practice pass on Friday am - you will be required to show the pass and drop it into a box at the Collecting Area entrance.

Late comers' risk being excluded from races. Please listen out for paddock announcements, but be aware of when you are due out, whether you've heard a call or not.

**PLEASE READ BULLETIN ISSUED LAST SEASON ON ARRIVING AT THE COLLECTING AREA IN TIME FOR RACES – End of this Document**

**We trialled a new WhatsApp Announcement channel last year – this was well received, you can access this group from this QR Code...**

**Please note this channel is not for regular comms and is used for outbound messaging to support tannoy calls at meetings only.**



### **Exit from the Circuit**

after the Chequered Flag, riders should leave the circuit as shown on the paddock plan at the return road after Old Hall Corner as directed by the flag off marshals.

**Please slow down as you pass the chequered flag as the exit is soon after Old Hall Bend.**

Approach this sector with due respect for the marshals

**There are no Practice Starts permitted at this circuit.**

### **Pit Lane Exit Warning**

Riders will be warned of bikes exiting pit lane with a stationary BLUE FLAG on the start/finish line.

### **On-Track Protocol**

All the usual flag signals will apply.

If you fall and are Ok – please try to give a thumbs up to marshals on that sector. Please keep your helmet on and visor down until you are on the safe side of the armco barrier. Recovery units will return your bike to the paddock from the circuit, you may travel with your bike if it is just you – you may be transported off the circuit by other means. Please follow the instructions given to you by the Marshals and Recovery Crews.

### **Split Starts**

The following classes are involved in Split-Starts:

The following classes are involved in Split-Starts:

**Rookie 600 – Open 500** >>> R600 will be the first pod, all races

**TGJC/Senior Ninja – 250MZ** >>> Ninjas will be the first pod – there will be minimum delay between groups

Once the grid is assembled all riders will proceed on a warm-up lap, indicated by the waving of a green flag from the startline gantry.

On re-assembly back onto the grid – a flag marshal will be positioned in the grid between the two pods. The first start will go on the lights. The second pod will remain in their positions for a period (10-20 secs) and then the second pod will start **also on the lights.**

## **Drafting the Pitwall**

Some riders feel there is an advantage to be gained by drafting along the pit wall. There is nothing to stop you doing this in theory, but please be aware - and make an allowance on your line - for pit boards being hung out from the pit wall during the session.

## **Medical Assistance**

If you require to attend Medical Center, our teams will arrange for you to be taken there safely. Be advised that your helpers should not attempt to attend the Medical Center to see how you are, they will be refused entry. They should contact the Race Office for an update on your circumstances.

## **In the Paddock**

**Motorised Paddock Bikes** are prohibited as are trailing electrical leads without wedge protectors.

**Generators** with consideration to your fellow riders, please shut down petrol driven generators in the paddock by **11.30pm** Please avoid starting them earlier than **8am**.

**Children** are welcome at Bemsee meetings but must remain under supervision at all times. The paddock is a dangerous place for a wandering child. Know where they are and what they're doing. U-16's are prohibited as spectators in the pit lane – we further request that Children do not ride pushbikes whilst racing is running and there is race bike traffic moving in the paddocks.

**Children under 12 yrs old must be accompanied by an adult at all times.**

### **Disposal of Tyres, Oil & Fuel Cans**

Circuits now require riders to remove used tyres from the circuit themselves. Please do not leave them in the paddock, garages or in the rubbish bins. Circuits are charged for disposal of tyres and if tyres are just left then Club's do risk having charges passed on. This also applies to oil and fuel drums.

**Hazardous Waste Materials** must be removed from the site or disposed of correctly, this includes Toilet waste – this should not be disposed of in the public toilets. There are Oil disposal drums on site for waste oil, please do not contaminate with other oil/solvents or cooking fat.

### **Oil Spillages in the Paddock**

Any spills must be reported to Paddock services at the earliest opportunity for treatment - any damage will be recharged to the club/team.

**No Pegging or Drilling into the tarmac paddock surface...or you will be charged for repairs.**

## **General Conduct**

Riders are reminded that they are responsible for their own conduct and that of their friends, family & supporters. In the same way that you would observe instructions & requests from Marshals & Officials, we expect the same of your entourage. Examples of abuse have occurred in the past where Officials have requested people to move from restricted areas. A reminder then that abusive or aggressive conduct towards our

volunteers will not be tolerated and risks the exclusion of the rider with whom any offending person is associated.

## **Speed Limits in the Paddock**

There is a strict **10MPH SPEED LIMIT** on the infield and in the paddock. A speed control point will monitor riders and breach of this limit may result in exclusion.

## **Medals & Awards**

We plan to hold our evening Prize-Giving for the first Friday raceday. This will be at the Podium adjacent to the Race Office (Weather permitting). This will start around 45 minutes after racing has finished at approx 7.15pm. If the weather prevents this we will advise the alternative location for the Presentation on the day.

In 2026 all podium finishers in main and sub-classes will receive our Gold-Silver-Bronze Medals and the wide range of spot-prizes will also be awarded during the evening. Please attend if you can and support your Class.

All podium finishers should collect Medals from the Race Office on the second raceday - Saturday.

## **Results**

Printed results are not being made available. Results and grid sheets are posted on the window of the race office for viewing. You can also access both live timing and all the results and grids from TSL Timing.com

## **Fire Extinguishers**

All riders are reminded they should have access to a 2kg dry powder extinguisher, the Club will conduct spot-checks each day.

## **Shower Facilities**

Showers will be open for the duration of the event.

## **Food and Drink**

MSV will be offering a full service from the Hospitality area in the Foggy Moss Center with a hot food menu. All are welcome to bring their own food and drink to the circuit.

### **Foggy Moss opening times.**

- Weds 1st April. Closed
- Thurs 2nd April. Food from 07:15 to 23:00. Bar from 17:00 until late.
- Fri 3rd April. Food from 07:00 to 23:00. Bar from 11:00 until late.
- Sat 4th April Food from 07:00 to 19:00. Bar from 11:00 until 19:00.



***The Club & Circuit wish you a safe and enjoyable weekend***

*Claire Hodgins (Race Secretary) 07756 101500*

*Mike Dommett (CEO) 07970 963572*





# Garage bookings at BMCRC For Oulton Park - Easter 2026

We operate a system for garages to enable payments to be made online.

You need to apply by email for a slot (or slots on behalf of a group). Individual riders will need to pay for the slots online, once you receive the email confirmation that you have a garage space allocated.

Riders booking for a group can also pay for the whole group, in advance.

The booking fee is held at £30 per rider for the weekend (inc Testday) in 2026.

## **The Details**

We operate an email only booking system, bookings for garages will only be taken by email, not by phone.

**For Oulton Easter 2-4 April meeting:** Please send your email requests from 2pm on previous **Thursday 26<sup>th</sup> March**. Allocations will be dealt with, in the order received

Email to **mikedommett@hotmail.com** only.

Enquiries prior to that time may not receive attention.

Confirmation will be emailed back before Monday morning to advise the garage booking for the meeting. The booking list will be via a link in the email and will also publish in the Meeting File on bemsee.net

Riders booking on behalf of others are requested to advise all the riders' names they are booking a garage for, ideally copy the other riders in your initial email.

The confirmation email will give the rider/booker links to enable payment for the allocated garage to be taken online before we get to the meeting – this avoids cash-handling.

This will be a link to pay £30 for each person in the garage for the Oulton event.

Requests will be checked against the entry list and garage spaces cannot be allocated if we have not received a rider's entry.

Payments must all be complete online prior to the meeting – otherwise reserved slots may then be released to any riders waiting.

For garage bookings going forward - we will aim to house 3/4 riders per garage at all venues.

Please try to be reasonable with the parking area allocated behind each garage – there needs to be enough space for all riders booked in each garage. If you have trailers – try to secure those elsewhere on site until Sunday, rather than using parking space for these.

# Attending the Collecting Area on time for Races



Tannoy and Mixlr will be used for the first call 6 to 8 minutes before the anticipated end of the race on circuit.

The second call will be approximately 4 to 5 minutes before the end of the race on circuit.

The final call will be around 1 to 2 minutes before the end of the race - this may coincide with the last lap flag.

Close attention will be paid to make a judgement as to whether any of these calls should be delayed in view of recoveries required on circuit. Recoveries can often be made whilst grids are coming from the Collecting Area and forming up, so it maybe that no delays will be involved.

A call will always be made to stop riders from attending the Collecting Area if an incident occurs on circuit that causes a red flag and requires medical or circuit vehicle interventions after any of the initial calls have been made.

There will be occasions where circuit incidents take place after the final call has been made. By which time most/all riders are in the Collecting Area – riders should remain there.

If the anticipated delay is upto 5 minutes then riders are assured that Race Control will run 2 x Warm-Up Laps on the short circuits, this will be advised by Collecting Area and Startline Crews to all riders. At long circuits like Snett 300 and Donington, 2 warm-ups are not really required.

The objective here is to try and avoid riders in the already called-up grid returning under their own steam back to the paddock...this can cause us significant delay and inconsistency when trying to return everyone back to the collecting area to get going again, if the delay is relatively short.

If riders choose to ignore this request to remain in place, then Race Control may choose to run the race with the riders that remained in the Collecting Area OR call the next race in the programme.

In the event of what looks like a serious accident or oil spillage and ongoing delay - the Clerk would then choose to send the called-up grid back to the paddock and we start the process again.

## **Reserves & Latecomers**

There will be a separate holding pen at Collecting Out for reserves to go to once they are recorded arriving at Collecting In.

## **When the Circuit is Clear....**

When the circuit is clear the Clerk will call the grid from the Collecting Area to the circuit.

After a period of one minute the Clerk will declare collecting area closed. This is the period that it takes to form up most grids at most circuits. (Cadwell takes longer)

This will have the effect of closing the access to the circuit **at the Collecting Out end of the Area.**

At the point that the Collecting Area is declared closed - the Collecting Out staff controlling access to circuit have the discretion to release any reserves.

Any latecomers that arrive at Collecting In after it has been declared closed will be allowed through Collecting In but held at Collecting Out behind any reserves.

Reserves that made the Collecting Area on time have the right to go to the grid in front of latecomers who arrive after the 1-minute period. The latecomer may also be released if there's still space on the grid and the time allows. If however, the warm-up lap has started then latecomers will be held at Collecting Out until they can be released to join **the back of the grid** on the start.

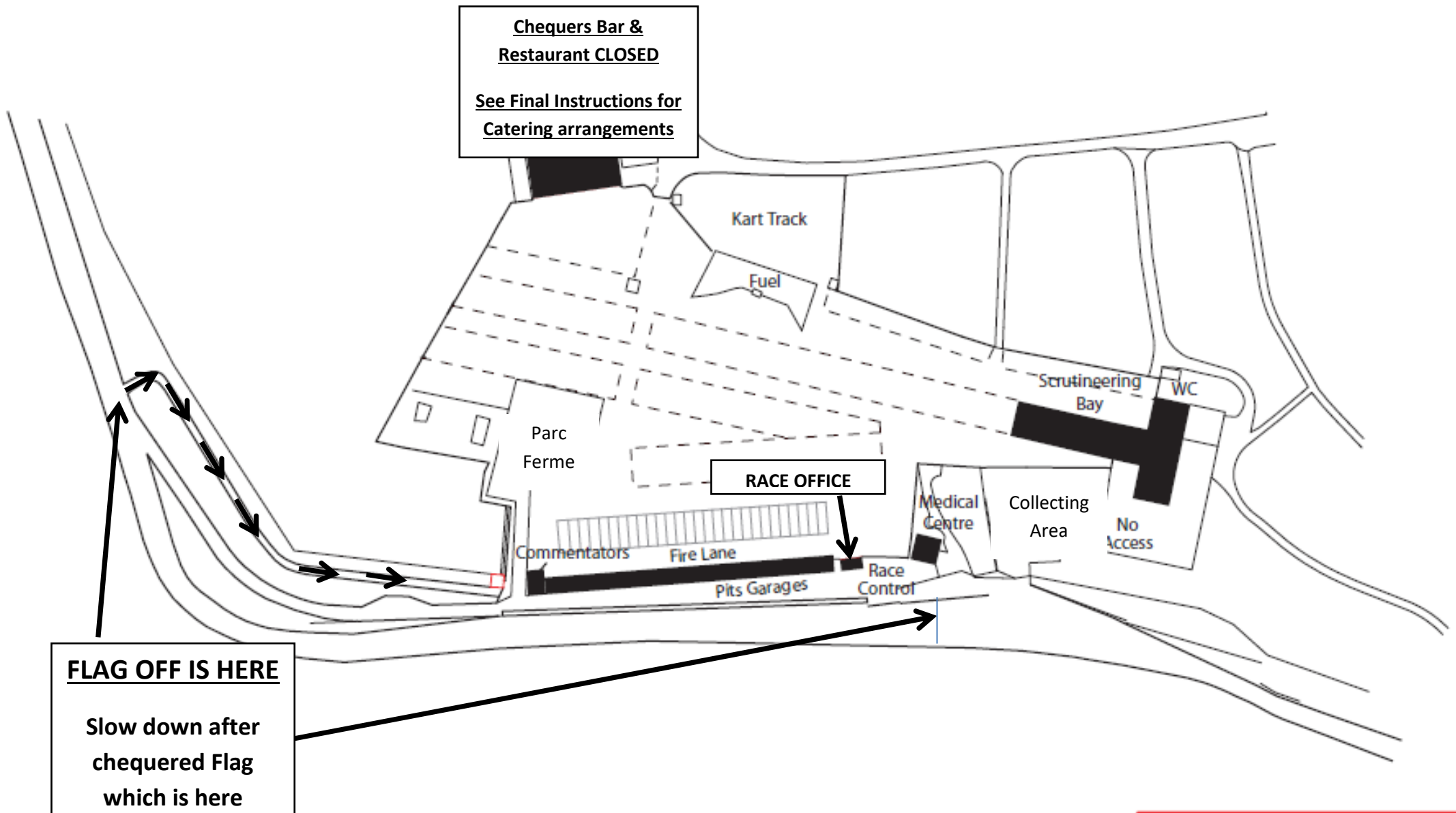
Latecomers do have the right to join a race, if grid capacity allows, once the race has started by proceeding down the pit lane, provided they are able to join the circuit before the completion of the first lap. Officials will advise and direct riders in these circumstances.

### **Red Flag - Race Restart**

In the event of a Red Flag and the race returning to the grid for a re-start. Latecomers may present themselves at Collecting In to be included in the restart grid, if space now allows, they may join the race and can take their place on the grid. Reserves that were released for the first race start can stay out there; Latecomers can only join the grid in the re-run scenario if grid space allows **including reserves already out there.**

The Latecomer will take their original grid position as the re-run is a new race, the first attempt being void.

# OULTON PARK – PADDOCK





OultonPark

# PADDOCK PLAN

OULTON PARK / 2-4 APRIL 2026



Assembly Area

Scrutineering Bay

Parc Fermé

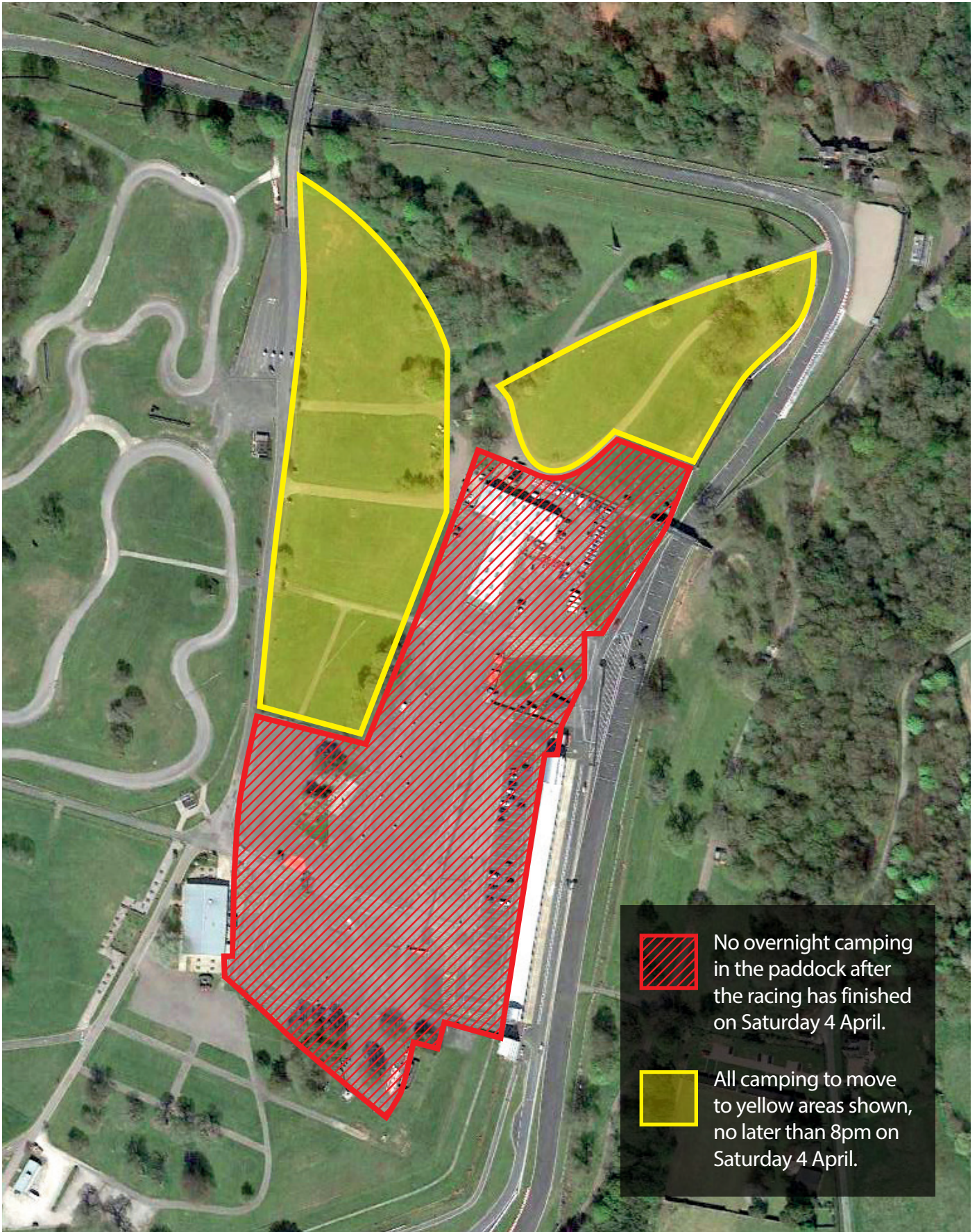
British SuperKarts





OultonPark

# OVERNIGHT CAMPING

BMCRC  
SATURDAY 4 APRIL 2026



 No overnight camping in the paddock after the racing has finished on Saturday 4 April.

 All camping to move to yellow areas shown, no later than 8pm on Saturday 4 April.